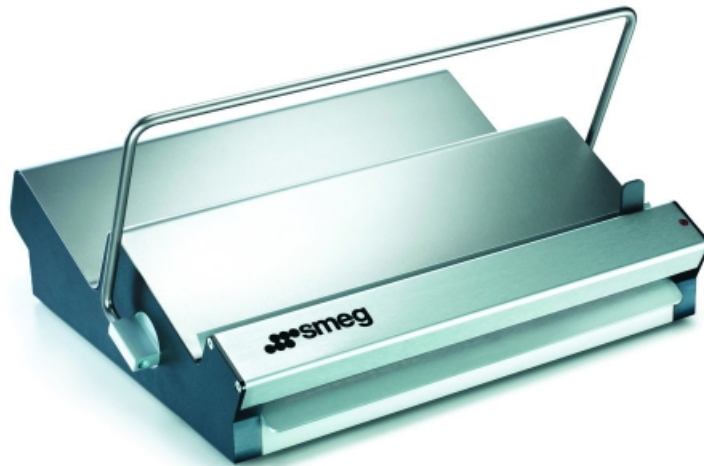


## SGI250

---



### IMPULSE THERMAL SEALER

[Download PDF](#)

---

- ✓ manual activation of sealing system
- ✓ sealing seam width 8 mm
- ✓ maximum sealing length 250 mm
- ✓ pre-set sealing temperature
- ✓ temperature control from min 0 sec max 9 sec
- ✓ stainless steel external panels
- ✓ external dimensions LxDxH: 420 x 360 x 220 mm
- ✓ electrical connection: 1/N/PE 230 V - 50 Hz - 850 W max

Smeg S.p.A. Via Leonardo Da Vinci, 4 - 42016 Guastalla (RE) Italy - P. IVA 01555030350  
Phone +39 0522 8211 - fax +39 0522 821453 - [service.instruments@smeg.it](mailto:service.instruments@smeg.it)